

# 215 HP (159 KW) PITTSBURGH GEAR KT285 USED GEAR REDUCER/ SPEED REDUCER / GEARBOX

MANUFACTURER: PITTSBURGH GEAR CO.

AGE: 1999

MODEL NO.: KT285

SERIAL NO.: 92697

HP RATING: 215

(159 KW)

INPUT RPM: 1750

RATIO: 24.4657:1

REDUCTION: TRIPLE

SERVICE FACTOR: 2.11

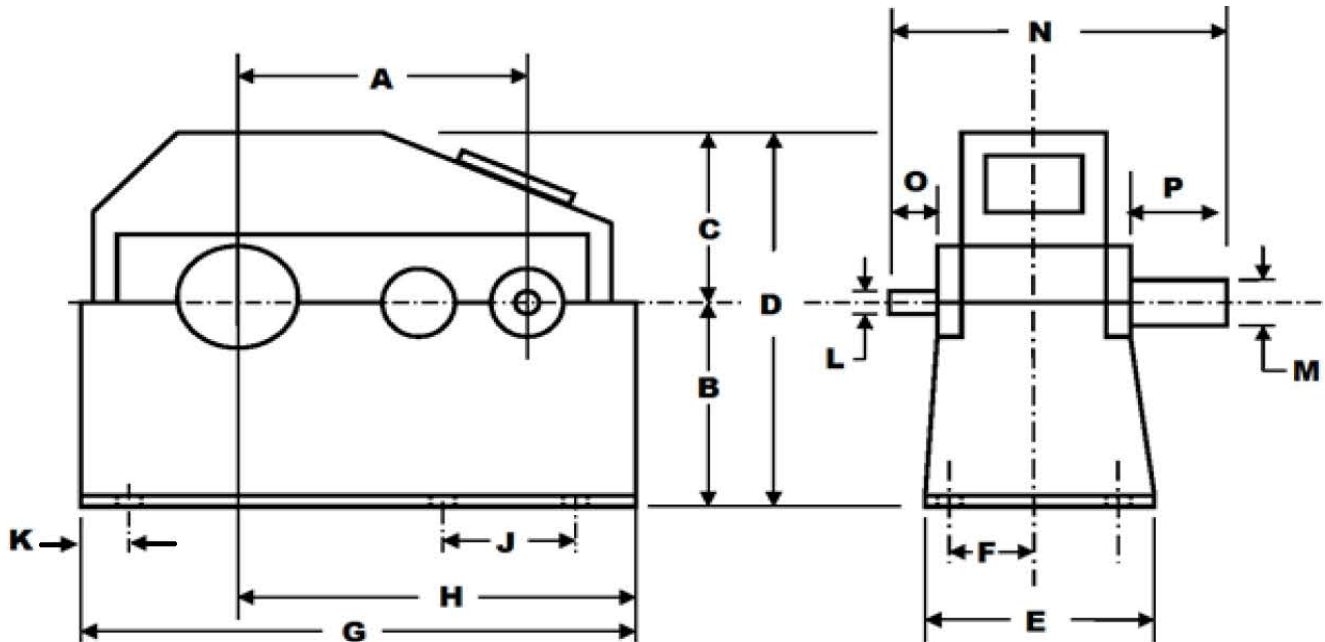
TYPE: PARALLEL

GEAR TYPE: HELICAL

BEARING TYPE: ROLLER

WEIGHT: 2,015 LBS.

(614 KG)



A=26.5"

E=17.25"

J=18.25"

N=33.5"

B=12.5"

F=7.12"

K=2"

O=3.8125"

C=10"

G=43.75"

L=4"

P=9.75"

D=22.5"

H=26.5"

M=5.8125"

INVENTORY ID: 200351-002-00

**CASEYUSA®**

Revised 3/11/19

Page 1 of 1

**CASEY**

275 Kappa Drive, Pittsburgh, PA 15238

Ph: (800) 882-7000 • (412) 963-1111

Fax: (412) 963-0378

E-mail: [mechanicalsales@caseyusa.com](mailto:mechanicalsales@caseyusa.com)

Web: [www.caseyusa.com](http://www.caseyusa.com)