

# 148 HP (110 KW) PITTSBURGH GEAR KD200F USED GEAR REDUCER / SPEED REDUCER / GEARBOX

MANUFACTURER: PITTSBURGH GEAR

AGE: 1999

MODEL NO.: KD200F

SERIAL NO.: 92701-2

HP RATING: 148

(110 KW)

INPUT RPM: 1750

RATIO: 14.4222:1

REDUCTION: DOUBLE

SERVICE FACTOR: 1.79

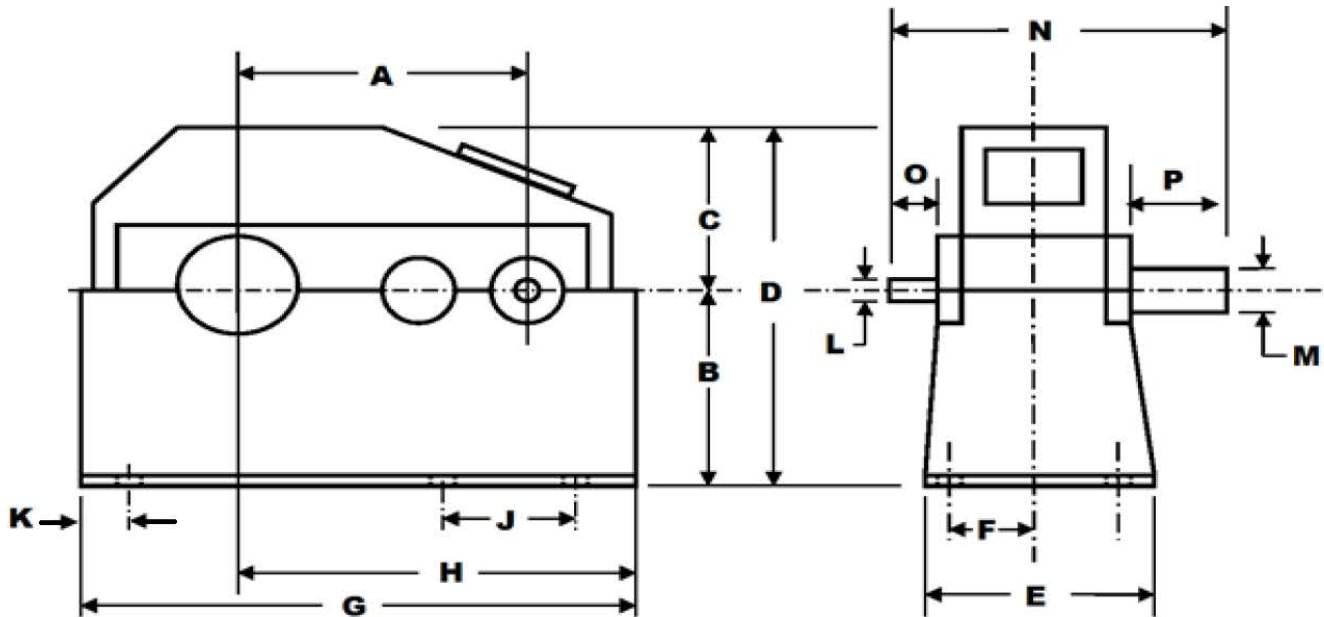
TYPE: PARALLEL

GEAR TYPE: HELICAL

BEARING TYPE: ROLLER

WEIGHT: 4,000 LBS.

(1,815 KG)



A=14.5"

E=17.5"

J=14"

N=25"

B=12.5"

F=7"

K=3.5"

O=4.25"

C=8"

G=35"

L=1.75"

P=9.5"

D=20.5"

H=22.75"

M=3"

INVENTORY ID: 200306-004-00

**CASEYUSA®**

Revised 3/11/19

**CASEY**

275 Kappa Drive, Pittsburgh, PA 15238

Ph: (800) 882-7000 • (412) 963-1111

Fax: (412) 963-0378

E-mail: [mechanicalsales@caseyusa.com](mailto:mechanicalsales@caseyusa.com)

Web: [www.caseyusa.com](http://www.caseyusa.com)