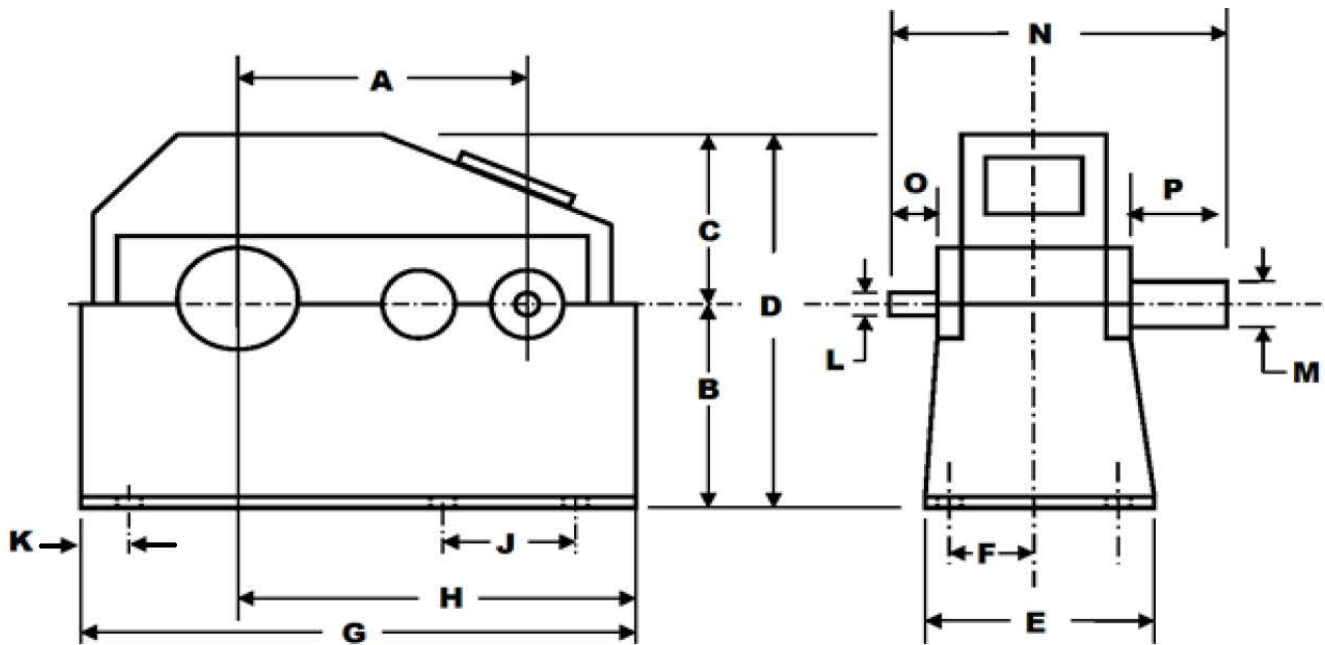


# 18.9 HP (14 KW) HORSBURGH & SCOTT LS 1300 PARALLEL GEAR REDUCER / SPEED REDUCER / GEARBOX

MANUFACTURER: HORSBURGH AND SCOTT  
 MODEL NO.: LS-1300  
 SERIAL NO.: J-4317  
 HP RATING: 18.9 (14 KW)  
 INPUT RPM: 850  
 RATIO: 5.5:1  
 REDUCTION: SINGLE  
 SERVICE FACTOR: 1.0  
 TYPE: PARALLEL  
 GEAR TYPE: HELICAL  
 BEARING TYPE: ROLLER  
 WEIGHT: 450 LBS. (200 KG)



A=6.5"	E=12"	J="	N=20"
B=7.75"	F=4.5"	K=1.625"	O=2.75"
C=7"	G=19.375"	L=1.375"	P=3.75"
D=14.75"	H=11"	M=2.375"	

INVENTORY ID: 106217-000-00 (REFERENCE TAG 106216-000-00 FOR SIMILAR GEARBOX)

**CASEYUSA®**

Revised 1/24/18

Page 1 of 1

**CASEY**

275 Kappa Drive, Pittsburgh, PA 15238

Ph: (800) 882-7000 • (412) 963-1111

Fax: (412) 963-0378

E-mail: [mechanicalsales@caseyusa.com](mailto:mechanicalsales@caseyusa.com)

Web: [www.caseyusa.com](http://www.caseyusa.com)