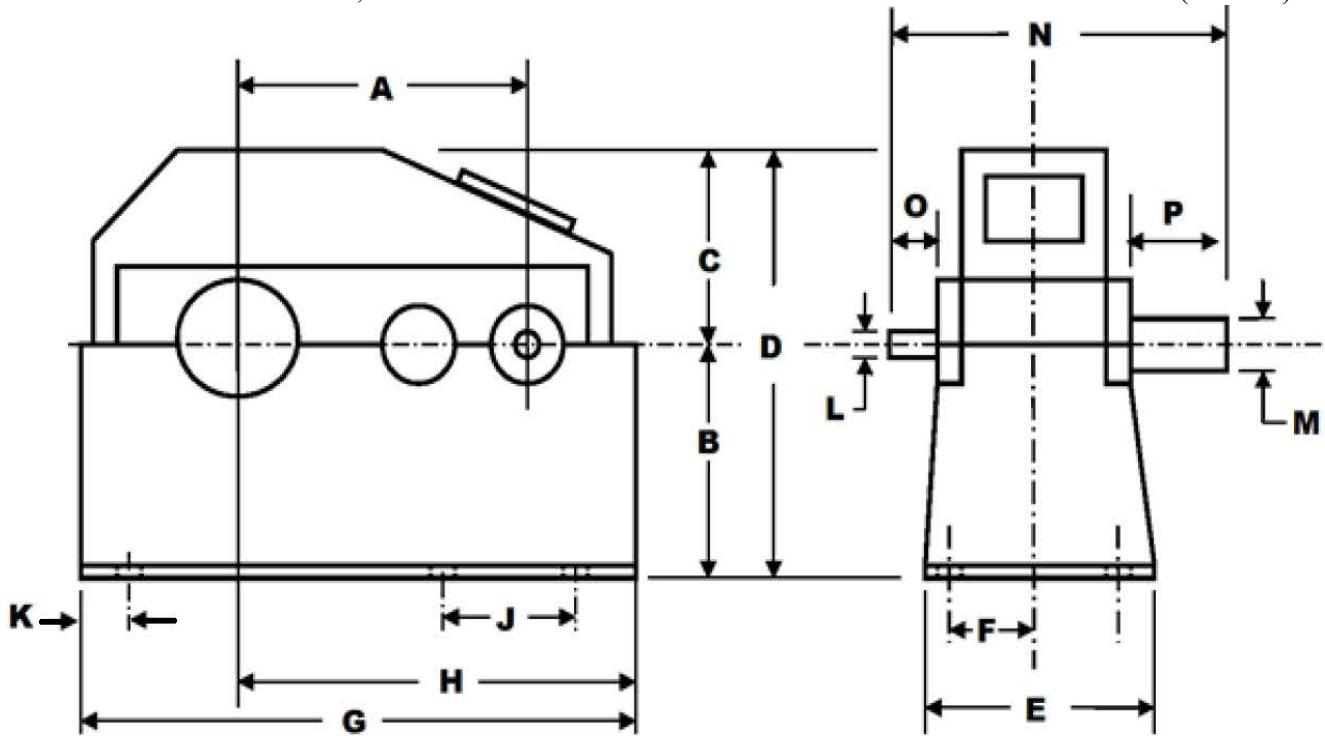


28.9 HP (21 KW) HORSBURGH & SCOTT LS 2000 PARALLEL GEAR REDUCER / SPEED REDUCER / GEARBOX

MANUFACTURER: HORSBURGH AND SCOTT
 MODEL NO.: LS 2000
 SERIAL NO.: H 6038
 HP RATING: 28.9
 INPUT RPM: 650
 RATIO: 7.9:1
 REDUCTION: SINGLE
 SERVICE FACTOR: 1.0
 TYPE: PARALLEL
 GEAR TYPE: HELICAL
 BEARING TYPE: ROLLER
 WEIGHT: 1,000 LBS.

(21 KW)

(450 KG)



A=10.25"	E=15.5"	J=24.5"	N=26.5"
B=12"	F=6.25"	K=2.25"	O=4"
C=10.5"	G=28.25"	L=1.5"	P=5.75"
D=22.5"	H=16.5"	M=3.5"	

INVENTORY ID: 106215-000-00

CASEYUSA®

Revised 1/24/18

Page 1 of 1

CASEY

275 Kappa Drive, Pittsburgh, PA 15238

Ph: (800) 882-7000 • (412) 963-1111

Fax: (412) 963-0378

E-mail: mechanicalsales@caseyusa.com

Web: www.caseyusa.com