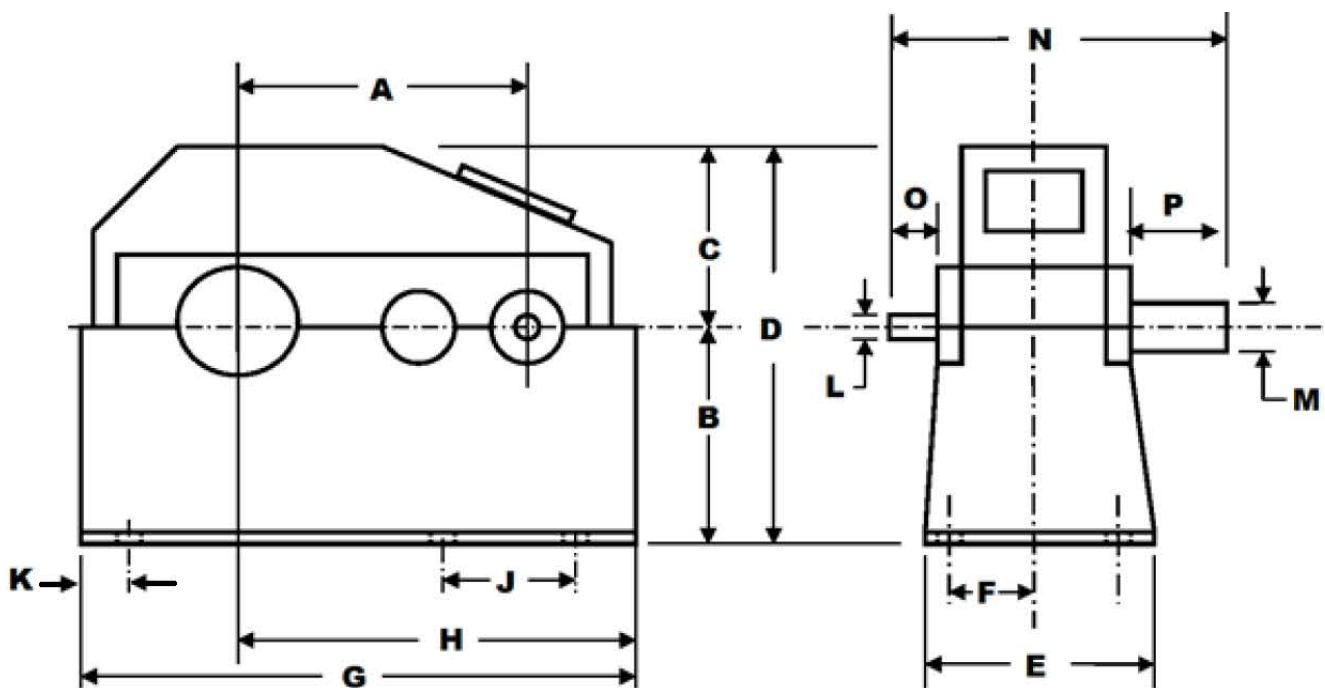


16.4 HP (12 KW) HORSBURGH & SCOTT LT-3600 PARALLEL GEAR REDUCER / SPEED REDUCER / GEARBOX

MANUFACTURER: HORSBURGH AND SCOTT
 MODEL NO.: LT-3600
 SERIAL NO.: K 7444
 HP RATING: 16.4
 INPUT RPM: 1200
 RATIO: 353:1
 REDUCTION: TRIPLE
 SERVICE FACTOR: 1.0
 TYPE: PARALLEL
 GEAR TYPE: HELICAL
 BEARING TYPE: ROLLER

(12 KW)



A=35.25"	E=25"	J=55.125"	N=44"
B=21"	F=13"	K=60.62"	O=5.688"
C=19"	G=61"	L=1.5"	P=10"
D=40"	H=40"	M=5.688"	

INVENTORY ID: 101650-000-00

CASEYUSA®

Revised 1/23/18

Page 1 of 1

CASEY

275 Kappa Drive, Pittsburgh, PA 15238

Ph: (800) 882-7000 • (412) 963-1111

Fax: (412) 963-0378

E-mail: mechanicalsales@caseyusa.com

Web: www.caseyusa.com